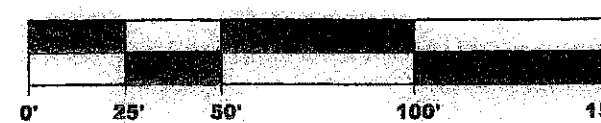


PLAT OF I-95 HOLDINGS

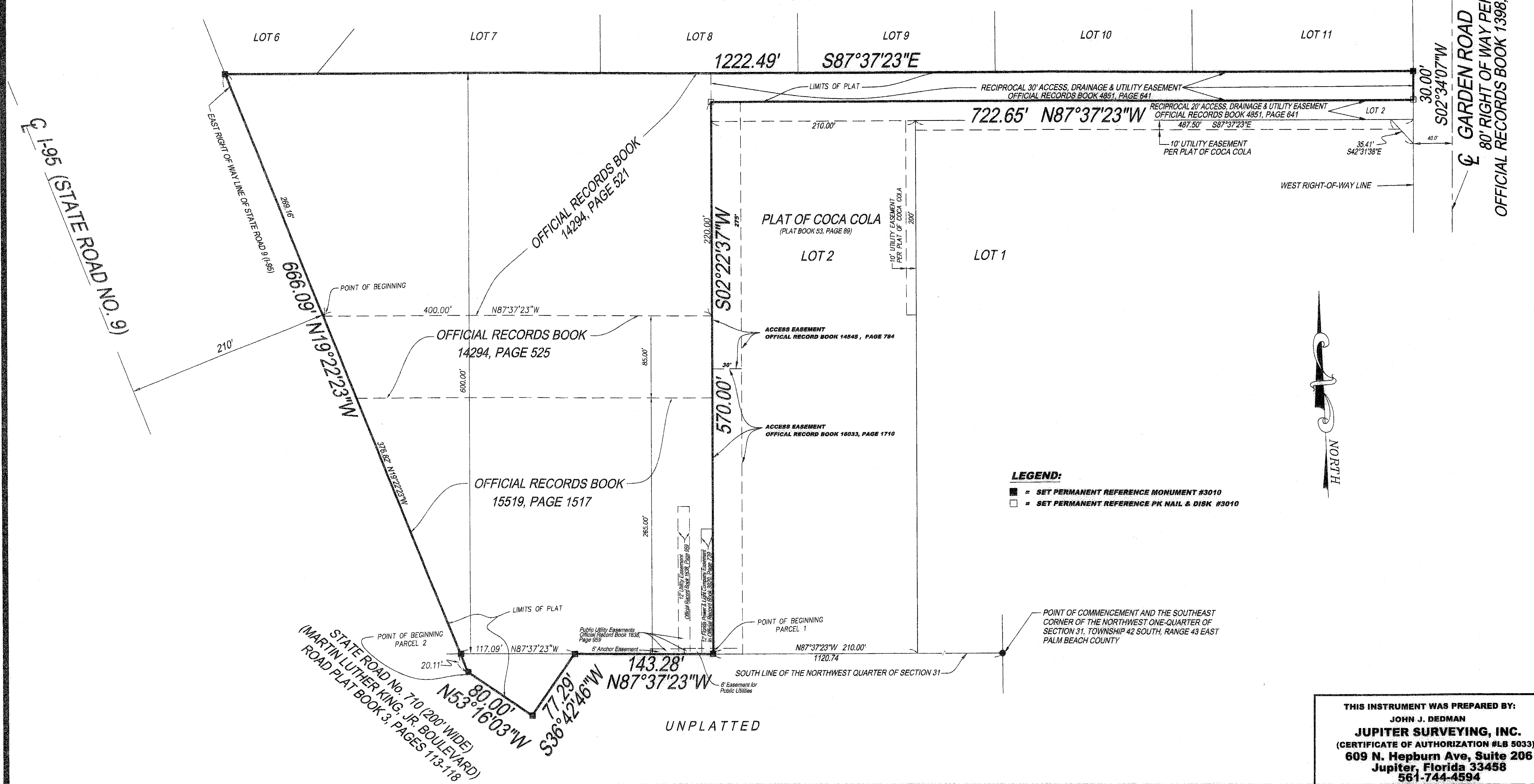
LYING IN THE WEST ONE HALF (W 1/2) OF SECTION 31, TOWNSHIP 42 SOUTH, RANGE 43 EAST,
CITY OF RIVIERA BEACH, PALM BEACH COUNTY, FLORIDA

MARCH 2004
SHEET 2 OF 2



SCALE: 1" = 50'

PLAT NO. 2
INTERSTATE INDUSTRIAL PARK
(PLAT BOOK 39, PAGES 131 & 132)



LEGEND:

- = SET PERMANENT REFERENCE MONUMENT #3010
- = SET PERMANENT REFERENCE PK NAIL & DISK #3010



THIS INSTRUMENT WAS PREPARED BY:
JOHN J. DEDMAN
JUPITER SURVEYING, INC.
 (CERTIFICATE OF AUTHORIZATION #LB 5033)
 609 N. Hepburn Ave, Suite 206
 Jupiter, Florida 33458
 561-744-4594